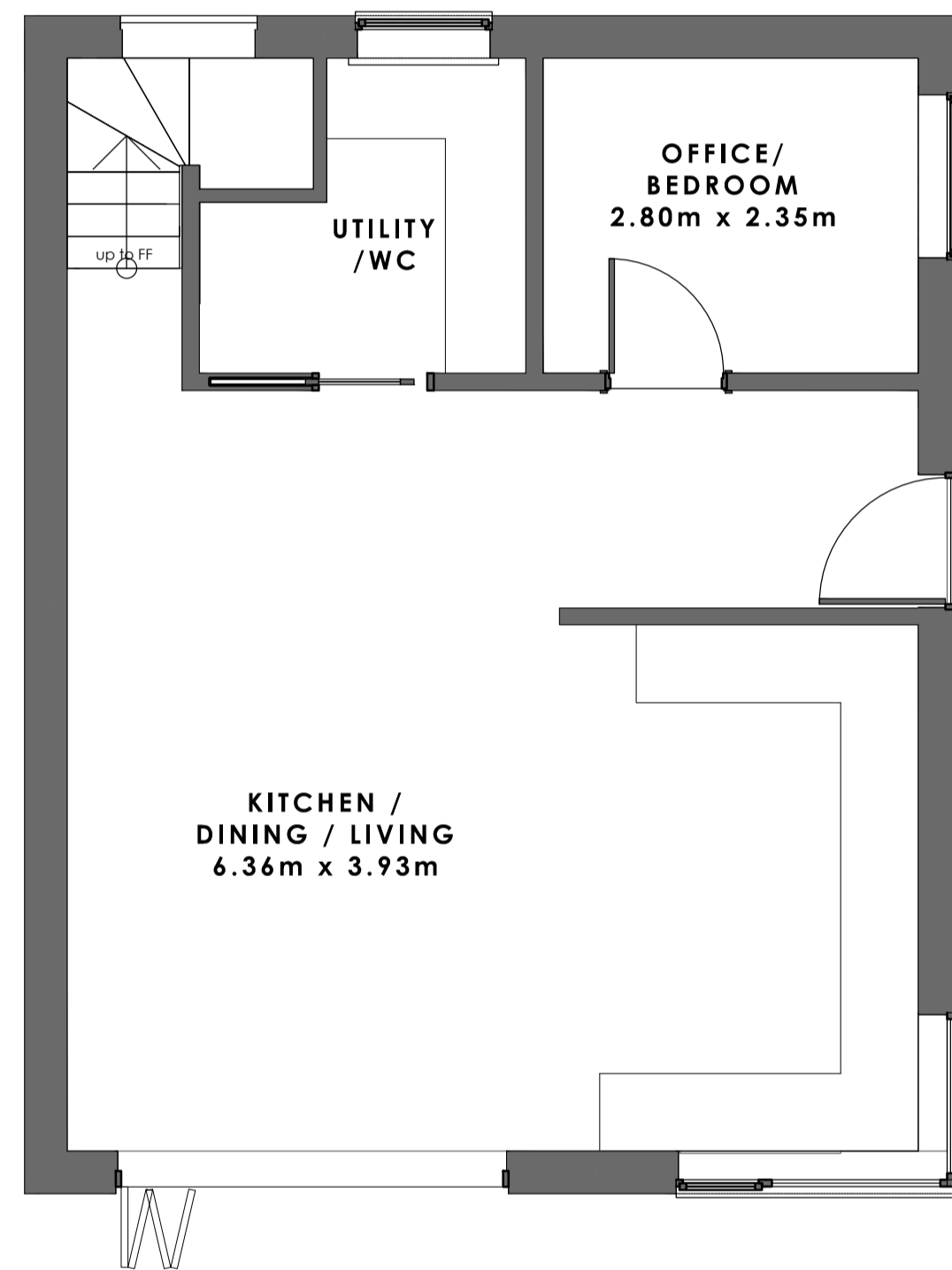
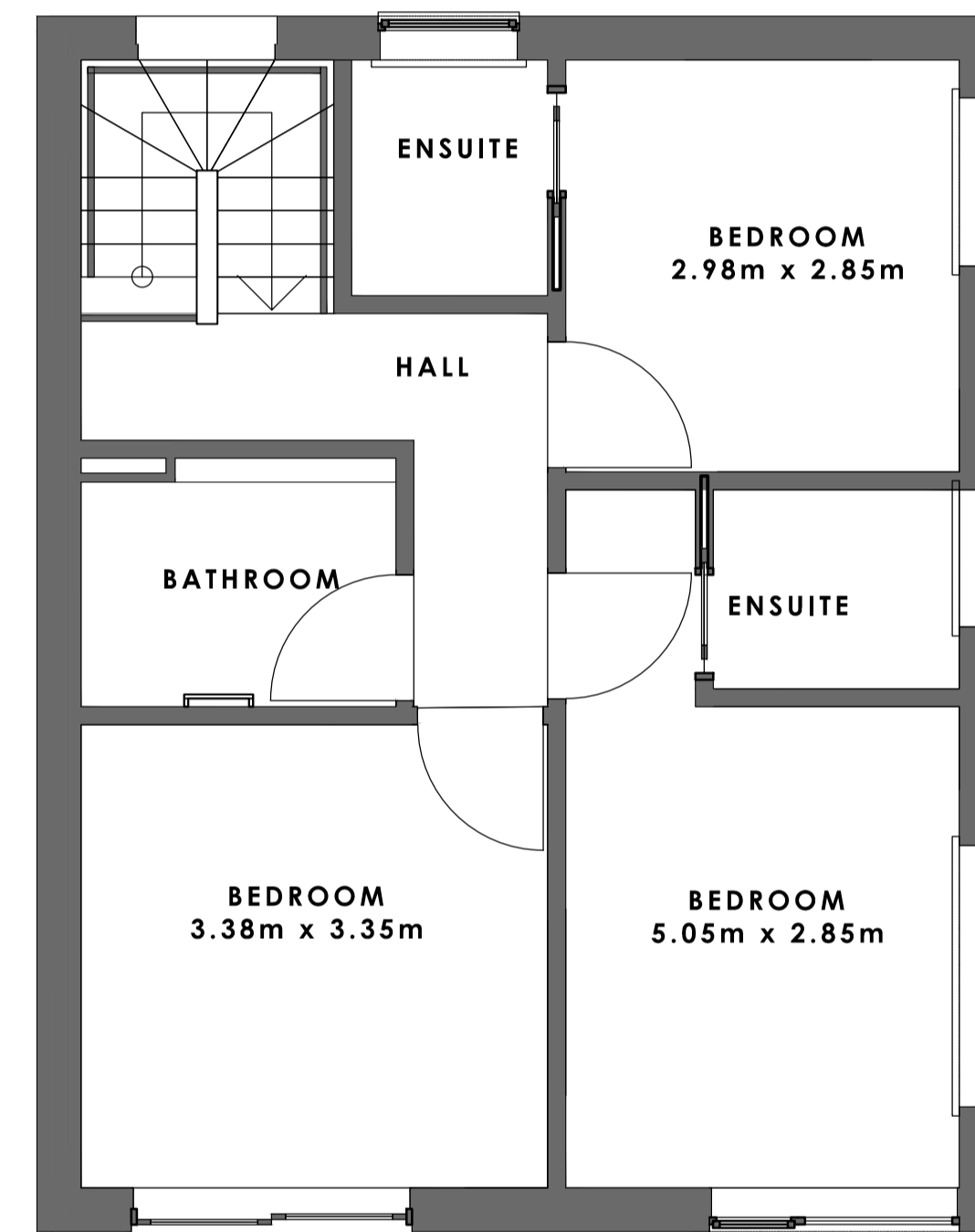


HOUSE TYPE THREE
Total Floor Area Approx. 103.8 sqm

This plan is for illustrative purposes only. While every attempt has been made to ensure accuracy of this plan, measurements & position of doors, windows, rooms & other items are approximate only.



GROUND FLOOR PLAN AS PROPOSED
APPROX. FLOOR AREA 51.90 SQM



FIRST FLOOR PLAN AS PROPOSED
APPROX. FLOOR AREA 51.90 SQM